



Total Solution Provider in Saw Device

SA881FL1

CDMA, Balanced RF-Rx SAW Filter
Revision 0:



- Electrical Characteristics
 - Package Dimensions
 - Testing Environment
 - Frequency Characteristics
-

SAWNICS Inc.

460 Cheonheung-ri, Seonggeo-eup, Cheonan-si, Chungcheongnam-do, 330-836 / Korea.
Tel: +82 41 550 9372 / Fax: +82 41 550 9399 / www.sawnics.com



Electrical Characteristics

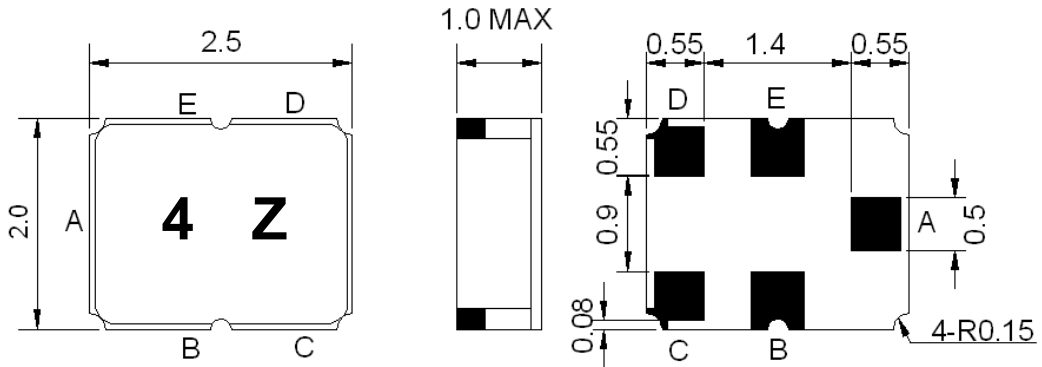
Maximum Ratings

Parameters Description	Unit	Minimum	Typical	Maximum
Operating Temperature Range	°C	-30	-	+85
Storage Temperature Range	°C	-40	-	+85
Maximum DC Voltage	V	-	-	5
Maximum Input Power	dBm	-	-	0
Source Impedance 50Ω CDMA Signal				
Source Impedance (single ended)	Ω	-	50	-
Load Impedance (balanced ended)	Ω	-	200/18nH	-
Package type & size	L1			
Length x Width	mm ²	-	2.5 x 2.0	-
Height	mm	-		1.0

Electrical Specification

Parameters Description	Unit	Minimum	Typical	Maximum
Center Frequency (Fo)	MHz	-	881.5	-
Insertion Loss within 869~894 MHz	dB	-	2.3	3.0
Attenuation:				
100 ~ 824 MHz	dB	40	55	-
824 ~ 849 MHz	dB	35	44	-
914 ~ 970 MHz	dB	20	25	-
970 ~ 3000 MHz	dB	40	55	-
3000 ~ 6000 MHz	dB	35	50	-
VSWR within 869~894 MHz	-	-	1.7	2.2
Output Amplitude Balance (S ₃₁ /S ₂₁)	dB	-1.0	±0.3	1.0
Output Phase Balance (Φ(S ₃₁)-Φ(S ₂₁)+180°)	degree	-10	±0.9	10

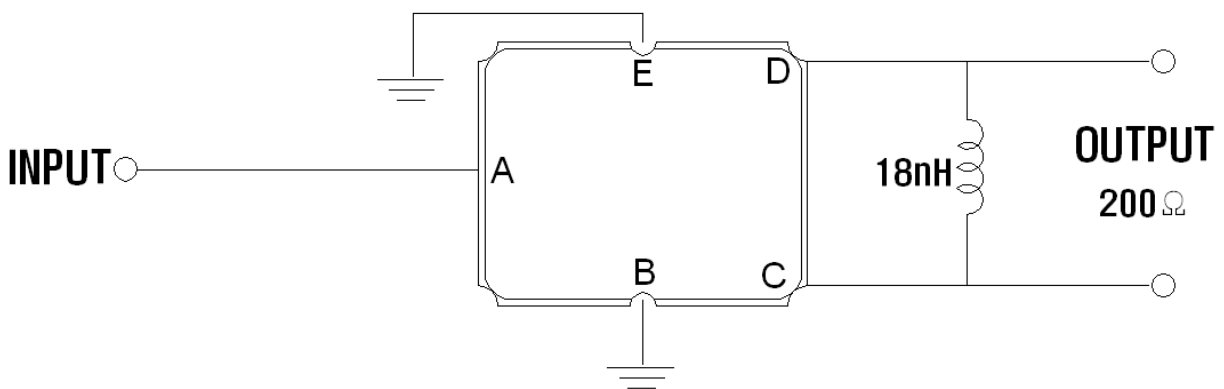
Package Dimensions



Marking Descriptions	
4	Series Number
Z	Data Code(Year+Month)

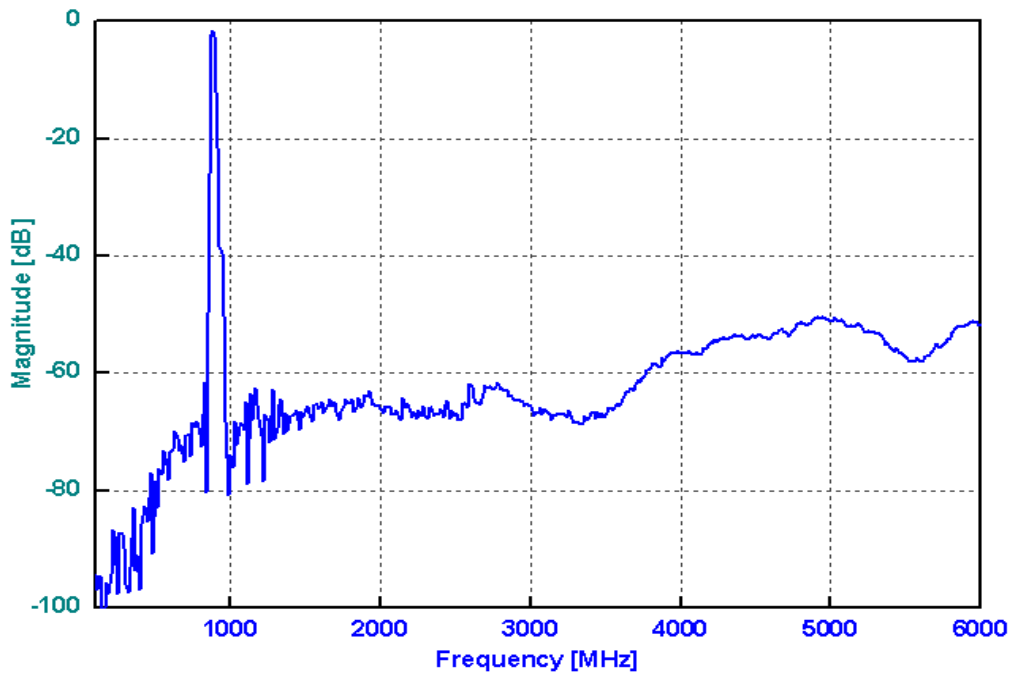
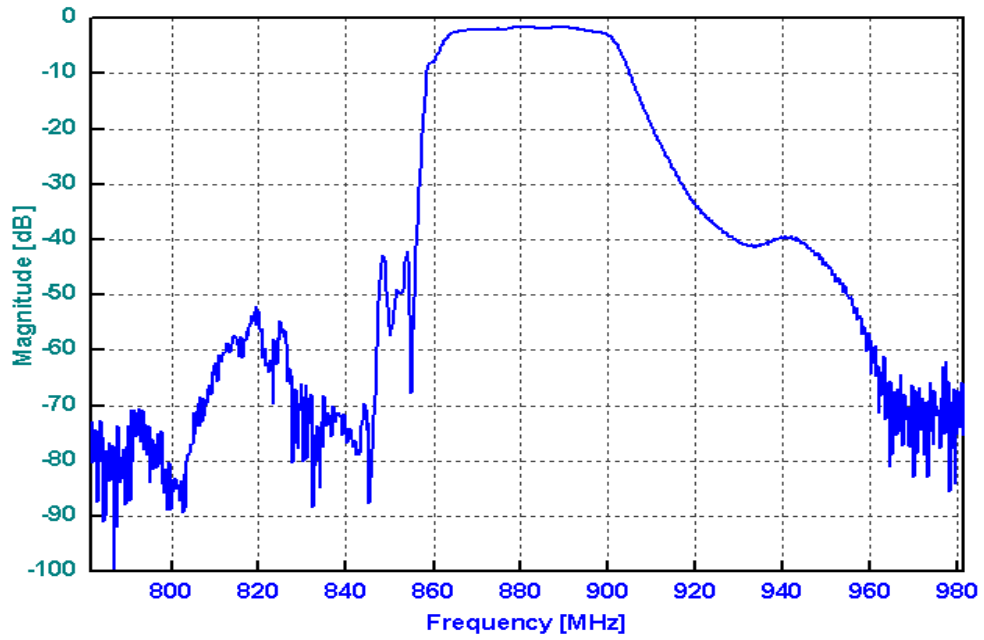
Pin Description	
B, E	Ground
A	In
C, D	Out

Testing Environment



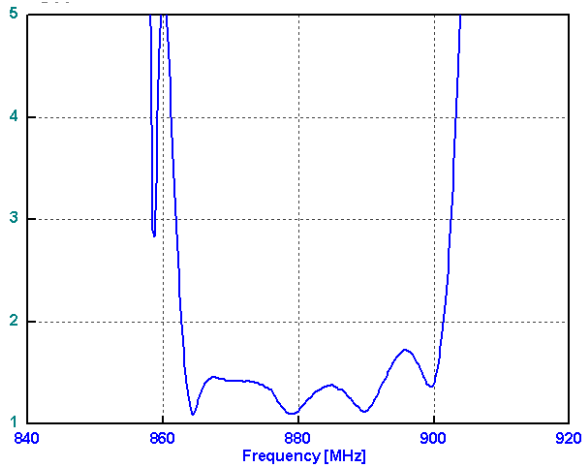
□ Frequency Characteristics

Frequency Response

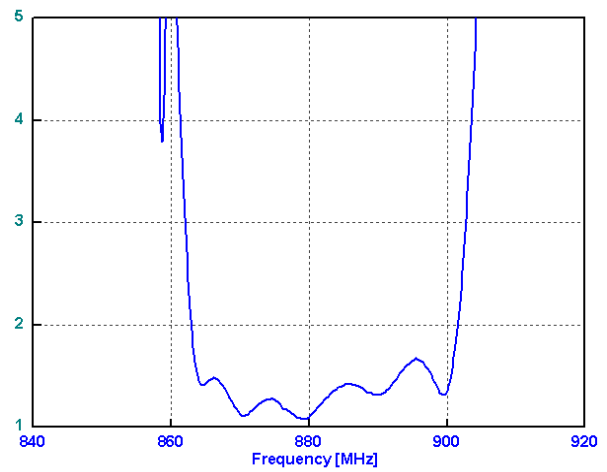


VSWR

S11

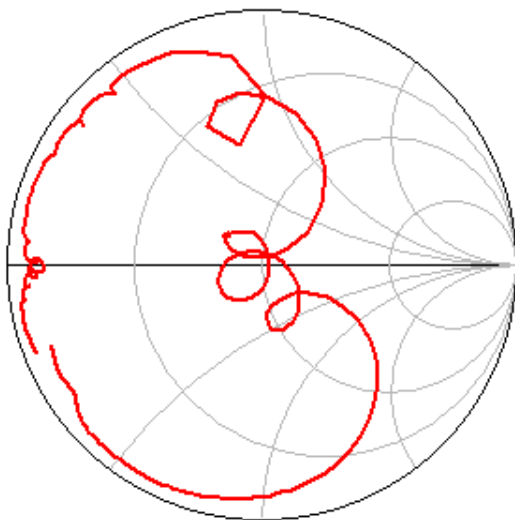


S22



Smith Chart

S11



S22

